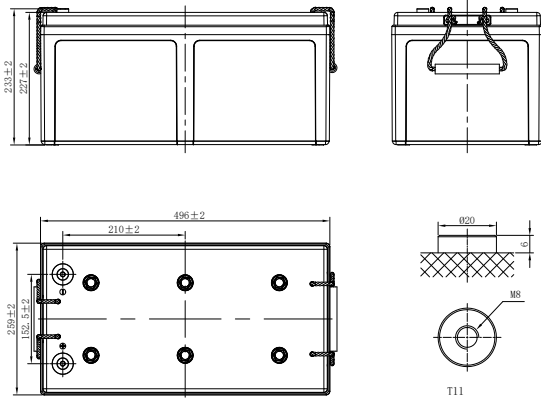
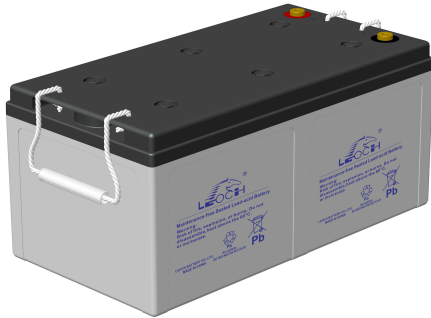


LHR SERIES-HIGH RATE

LHR12890W (12V890W)



CHARACTERISTICS

Item	Specifications	
Rated Voltage	12V	
Nominal Rate (25°C)	W ₁₅ , 1.67V/cell	890W/cell
Nominal Capacity (25°C)	C ₁₀ , 1.80V/cell	235Ah
Dimension	Length	496mm (19.5inches)
	Width	259mm (10.2inches)
	Container Height	227mm (8.94inches)
	Total Height	233mm (9.17inches)
Approx Weight	77.0kg (169.8lbs)	
Terminal	T11(M8)	
Container Material	ABS (UL94 HB or V-0 optional)	
Short-circuit current	4700A	
Internal Resistance (25°C)	Approx 2.5 mΩ (Fully charged)	
Operating Temp. Range	Discharge	-20~55°C (-4~131°F)
	Charge	-20~40°C (-4~104°F)
	Storage	-15~50°C (5~122°F)
Nominal Operating Temp. Range	25±3°C (77±5°F)	
Max.Charging Current (25°C)	0.25C	
Charge voltage (25°C)	Standby Use	Equalization Use
	2.25-2.30V/cell	2.30-2.40V/cell
Temp. Coefficient	-3mV/cell/°C	-4mV/cell/°C
	40°C (104°F)	106%
Effect of temp. to Capacity	25°C (77°F)	100%
	0°C (32°F)	86%
	Self Discharge	≤ 3% per month at 25°C (77°F)

DISCHARGE TABLE

Constant Current Discharge (Amperes) at 25°C (77°F)														
F.V/Time	5min	10min	15min	20min	30min	45min	1h	1.5h	2h	3h	4h	5h	8h	10h
1.85V/cell	532.4	425.0	368.5	289.8	200.8	159.6	129.3	95.0	77.7	57.8	45.7	38.7	26.7	22.9
1.80V/cell	605.5	482.5	417.6	327.6	226.5	169.5	133.7	97.8	82.2	59.8	47.4	40.2	27.3	23.5
1.75V/cell	657.7	523.2	452.1	353.7	243.5	179.7	139.2	101.9	85.4	61.0	49.0	41.4	27.6	23.6
1.70V/cell	703.1	557.9	480.2	375.1	258.2	188.6	145.3	106.1	87.4	62.4	50.2	42.3	28.0	23.8
1.67V/cell	727.6	575.5	494.2	385.3	264.4	193.7	146.9	108.9	89.5	63.7	50.8	42.9	28.3	24.1
1.60V/cell	753.4	595.2	509.5	395.2	270.8	198.5	149.6	112.5	91.3	65.4	52.0	43.7	28.5	24.3

Constant Power Discharge (Watts/cell) at 25°C (77°F)														
F.V/Time	5min	10min	15min	20min	30min	45min	1h	1.5h	2h	3h	4h	5h	8h	10h
1.85V/cell	994.3	799.6	697.8	551.2	383.8	306.9	250.2	184.1	151.1	113.0	89.7	76.2	53.1	45.5
1.80V/cell	1112.3	894.5	780.5	616.6	429.3	323.7	257.2	188.7	159.2	116.2	92.7	78.9	54.0	46.7
1.75V/cell	1187.1	954.7	833.0	658.1	458.2	341.2	266.6	195.6	164.6	118.4	95.5	80.9	54.4	46.8
1.70V/cell	1248.0	1003.6	875.8	691.9	481.7	355.6	276.7	202.7	167.8	120.6	97.4	82.5	55.2	47.1
1.67V/cell	1268.3	1019.9	890.0	703.1	489.5	363.2	278.2	207.0	171.1	122.6	98.3	83.3	55.7	47.7
1.60V/cell	1286.0	1034.2	902.5	712.9	496.4	368.7	281.3	212.5	173.4	125.1	100.1	84.5	55.9	47.9

LHR SERIES-HIGH RATE

LHR12890W (12V890W)



APPLICATIONS

- UPS
- Hospitals and Testing Laboratories
- Emergency Power Supply
- Industrial Process Control Facilities
- Banks and Financial Markets
- Data and Network Operation Centers

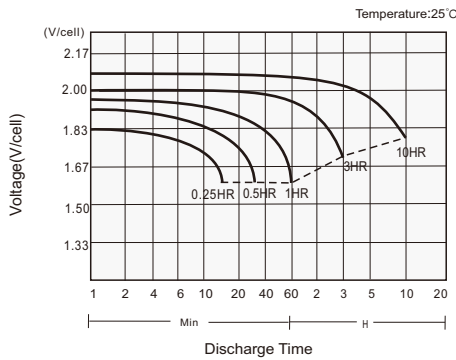
GENERAL FEATURES

- 12 years design life (25°C)
- Excellent high current performance - optimised for short discharge time
- Advanced AGM technology for superior high-rate power
- Long Life Alloy - minimizing grid growth, reducing gassing, and extending battery life
- Epoxy-sealed posts eliminate leaks
- Optimal energy density - saves floor space

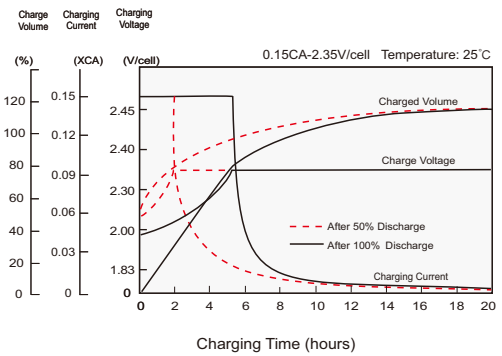
STANDARDS

- Compliance with IEC 60896 standards
- Classified as "Long Life" according to Eurobat
- CE, UL Approved
- Manufactured in Leoch@IATF 16949, ISO 45001, ISO 9001 and ISO 14001 certified production facilities

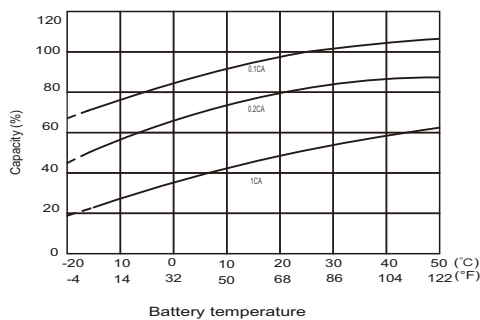
Discharge Characteristics



Charging Characteristics



Effects of Temperature on Capacity



Self Discharge Characteristics

